

# Software Download Tool For CL75



Release	Date	Department	Notes to change
1.0	26.09.2005	COM MD CC GRM T	New document
1.1	18.10.2005	BenQ CC CES	USB adapter included

## ***Table Of Contents***

1.	Installation & Requirements.....	3
2.	Tool Description.....	4
3.	SW Download Process .....	5
4.	Software Naming.....	5
5.	MMI Test.....	6
6.	Language Group Overview .....	7

## 1. Installation & Requirements

### ○ *Hardware Requirements:*

- Serial Data Cable L36880-S5601-A800
- ST55 USB adapter F30032-P331-A1
- PC with at least Pentium III, 800 MHz

### ○ *Software Requirements:*

- Siemens CL75 Software Download Tool
- USB FTDI driver for ST55 USB adapter
- Supported OS: Win98, 2K, NT, XP

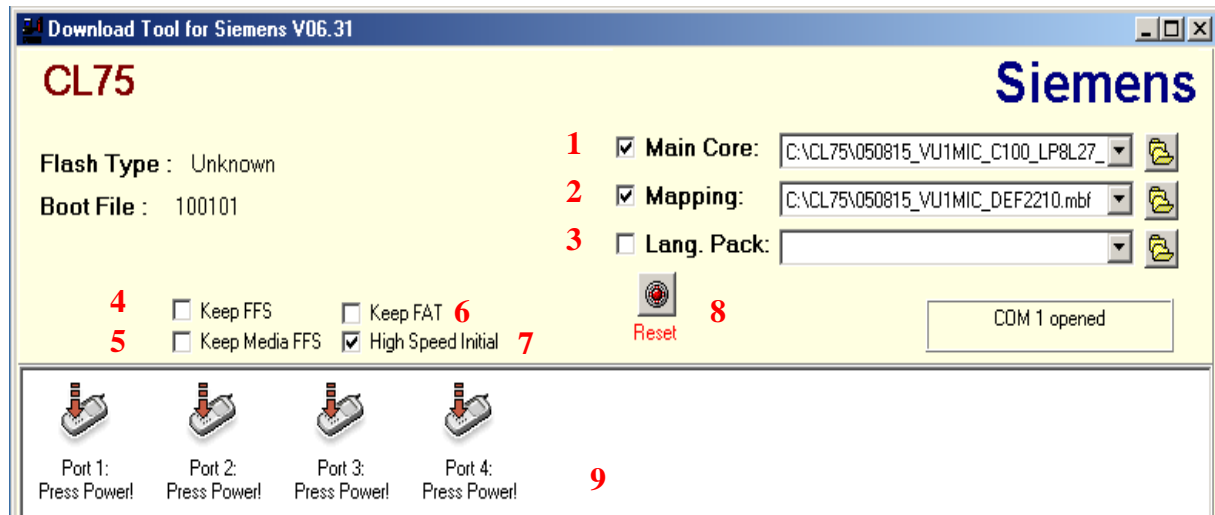
### ○ *Installation Of the USBFTDI Driver:*

If you are using the ST55 USB adapter for the first time, you need to install the USB FTDI driver.

When you plug the USB cable into the PC , it will automatically detect the new connected device and will ask you to install the driver for.

You need to root the installation assistant to the folder where you have already extracted the USB FTDI driver

## 2. Tool Description



- [1] **“Main Core”**: Checkbox to enable the core .mbf file.
- [2] **“Mapping”**: Checkbox to enable the mapping .mbf file.
- [3] **“LangPack”**: Checkbox to enable the langpack .mbf file.
- [4] **“Keep FFS”**: Checkbox to enable keeping FFS of user data.
- [5] **“Keep Media FFS”**: Checkbox to enable keeping Media FFS of user data.
- [6] **“Keep FAT”**: Checkbox to enable keeping FAT of user data.
- [7] **“High Speed Initial”**: keep it to checked to enable high speed download.
- [8] **“Reset”**: Reset button.
- [9] **“Main window”**: Icon to show the state of port.

### 3. SW Download Process

1. Execute the CL75 download tool.
2. Connect the handset to cable.
3. In case you are using a combination : Siemens data cable + USB adapter the used interface will change as follow :



4. Power up the handset in order to start the download.

### 4. Software Naming

- *Software version:*

(Released Date: YYMMDD) n-(TTP version) (Project) (Customer)-(RD version) D  
(Function)  
Ex: 050524n-08.00VU1.MIC-0.46D (TPCWMJ)

- *Mapping version:*

(Released Date)- (Project) (Customer)-(Region)-(Structure) (Modification)  
Ex:050523-VU1.MIC-DF-M17.01

- *Language package version:*

(Released Date)- (Project) (Customer)-(Region)-(Structure) (Modification)  
Ex:050523-VU1.MIC-LPC-L02.01

T: Dual Band  
P: GPRS support  
C: CSD support  
W : WAP support  
M : MMS support  
J : Java Support

## 5. MMI Test

- In CL75, there is build-in test interface for engineer to perform simple MMI test.
- Input **\*#369#**, the test items include :

### ❖ Contrast

- Up & down to adjust
- OK & Back to exit

### ❖ Base band testing

- ✓ *Illumination*: test if the backlight shows.
- ✓ *Buzzer*: test if the ring tone gives sound.
- ✓ *Vibrator*: test if the vibrator works.
- ✓ *Keypads*: press each key to eliminate the indicators on screen.
- ✓ *RTC status*: show if the RTC is OK.
- ✓ *Microphone Speaker Test*: speak to microphone and listen to the sound from receiver.
- ✓ *LCD test*

### ❖ Software Version

- Check the current software version
  - ✓ Software Version
  - ✓ Mapping Version
  - ✓ LP Version

### ❖ Auto-answer

- Valid set up when insert test SIM

### ❖ DTMF

- Determine if DTMF function valid during calling ( Developer feature )

### ❖ Comport

- ✓ *AT-DATA* : set phone jack for special download port
- ✓ *GENIE*
- ✓ *OFF* : set phone for normal earphone usage

❖ **Camera**

- Enter preview mode

❖ **IrDA test**

- Enter IrDa receive mode

## 6. Language Group Overview

	Region	3rd Block of Part No.	Text LG	Text Languages	T9 LG	T9
1	Germany, South & Medit., South West Europe	1xx	LG 1 International	English, German, French, Turkish, Italian, Greek, Spanish, Portuguese, Braz. Portuguese, Catalan	1	English, German, French, Turkish, Italian, Greek, Spanish, Portuguese, Catalan, Braz. Portuguese
2	Northern Europe	2xx	LG 2 Nordic	English, German, Danish, Norwegian, Swedish, Finnish, Dutch, French	2	English, German, Danish, Norwegian, Swedish, Finnish, Dutch, French
3	Eastern Europe	3xx	LG 3 Eastern Europe	English, Polish, Russian, Latvian, Lithuanian, Estonia, Ukraine	3	English, Polish, Russian, Estonia, Latvian, Lithuanian, Ukraine
4	Central Eastern Europe	4xx	LG 4 CEE	English, German, Hungarian, Czech, Slovak, Croatian, Dutch, Polish, Slovene	4	English, German, Hungarian, Czech, Slovakian, Dutch, Polish, Slovenian, Croatian
5	Central Eastern Europe Bulgaria, Romania, Israel	5xx	LG 5 CEE 2	English, German, French, Bulgarian, Romanian, Russian	5	English, German, French, Bulgarian, Romanian, Russian
6	Middle East & Africa	6xx	LG 6	English, French, Tagalog, Malayam, Hindi, Portuguese	6	English, French, Portuguese, Hindi, Malayam, Tagalog
7	APAC w/o China	7xx	LG 7 South East Asia	English, Thai, Malaysian, Indonesian, Vietnamese, Tagalog, Hindi, Malayam	7	English, Thai, Vietnamese, Hindi, Indonesian, Malaysian, Malayam, Tagalog
72	APAC Retail	72x	LG 72 APAC retail	English, Chinese trad., Chinese simpl., Chinese font, Thai, Indonesian, Malayam, Vietnamese	72	English, Chinese trad., Chinese simpl., Thai, Indonesian, Malayam, Vietnamese, Chinese font

8	China	8xx	LG 8 China	English, Chinese trad., Chinese simpl., Chinese font	8	English, Chinese trad., Chinese simpl., Chinese font
91	Russia	91x	LG 91	Russian, English, German, French, Italian, Spanish	91	Russian, English, German, French, Italian, Spanish
93	Macedonian	93x	LG 93	English, Greek, Macedonian, Turkish, Russian, Bulgarian, German	10	English, Greek, Turkish, Russian, German
95	NA, LAM	95x	LG 95 LAM	English, German, Mexican Spanish, Canadian French, Brazilian Portuguese	9	English, German, Canadian French, Mexican Spanish, Brazilian Portuguese